

MONTHLY MEMBERSHIP PROGRESS REPORT

LOCATION WEST VIRGINIA

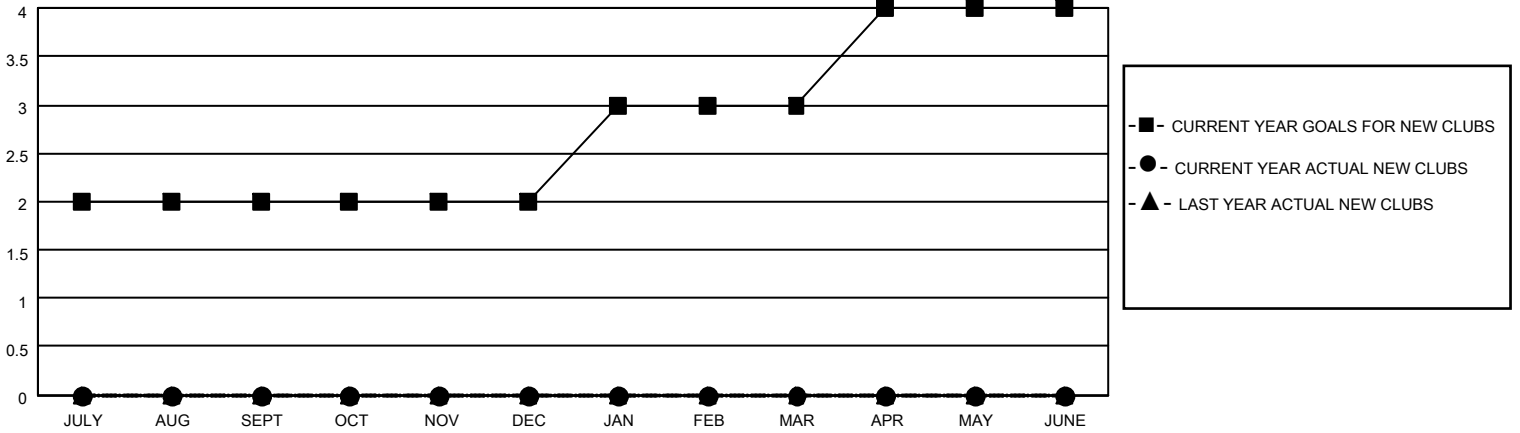
District 29 I

Results as of: 7/31/2023

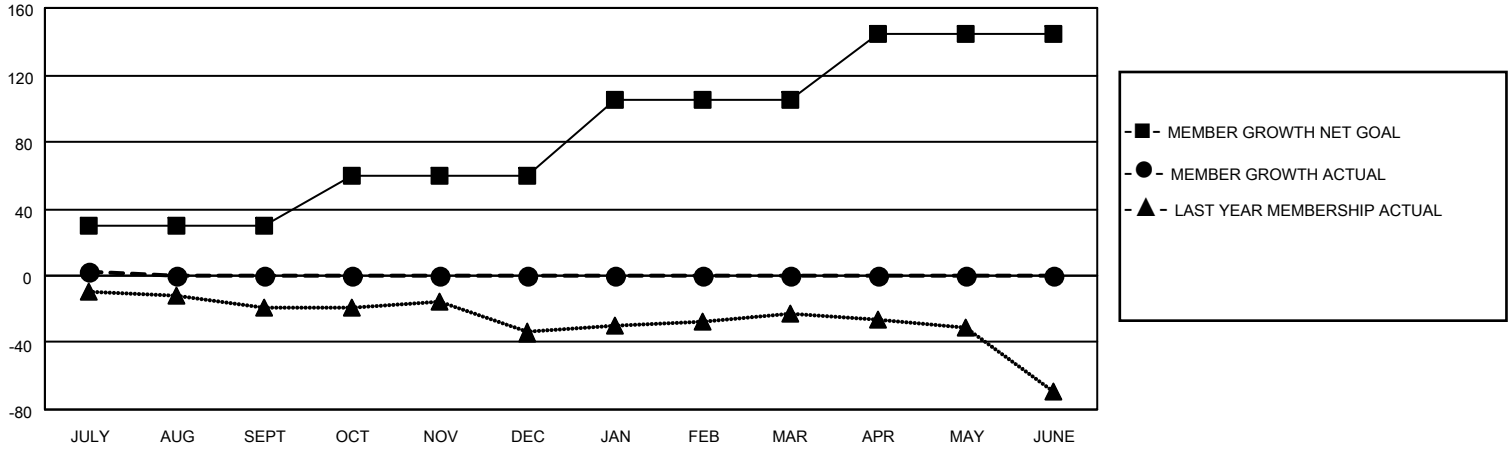
| Clubs | | | |
|-----------------------|---------------|-----------|---------------|
| RESULTS FOR 2023-2024 | | | |
| QUARTER | NEW CLUB GOAL | NEW CLUBS | DROPPED CLUBS |
| JULY/AUG/SEPT | 2 | 0 | 0 |
| OCT/NOV/DEC | 0 | 0 | 0 |
| JAN/FEB/MAR | 1 | 0 | 0 |
| APR/MAY/JUNE | 1 | 0 | 0 |

| Members | | | |
|-----------------------|------------------------|----------------------|---|
| RESULTS FOR 2023-2024 | | | |
| QUARTER | MEMBER GROWTH NET GOAL | MEMBER GROWTH ACTUAL | DROPPED MEMBERS ACTUAL (including transfers) |
| JULY/AUG/SEPT | 30 | 16 | 13 |
| OCT/NOV/DEC | 30 | 0 | 0 |
| JAN/FEB/MAR | 45 | 0 | 0 |
| APR/MAY/JUNE | 40 | 0 | 0 |

GOALS AND ACTUAL NEW CLUBS CUMULATIVE



GOALS AND ACTUAL MEMBERS CUMULATIVE



| | |
|------------------------|-----------|
| DROPPED CLUBS: 0 | |
| DROPPED MEMBERS | |
| DECEASED | 4 |
| CLUB CANCELLED | 0 |
| OTHER | 9 |
| TOTAL | 13 |

10 CLUBS OF 55 ADDED 1 OR MORE NEW MEMBERS

[CLICK HERE FOR CUMULATIVE MEMBERSHIP DATA](#)

| <u>GENDER DISTRIBUTION</u> | |
|--|--------------|
| MALE | 908 (62.36%) |
| FEMALE | 547 (37.57%) |
| NON BINARY | 0 (0.00%) |
| PREFER NOT TO ANSWER | 1 (0.07%) |
| TOTAL FAMILY UNIT MEMBERS | 470 |
| FAMILY MEMBERS PAYING HALF DUES | 240 |